

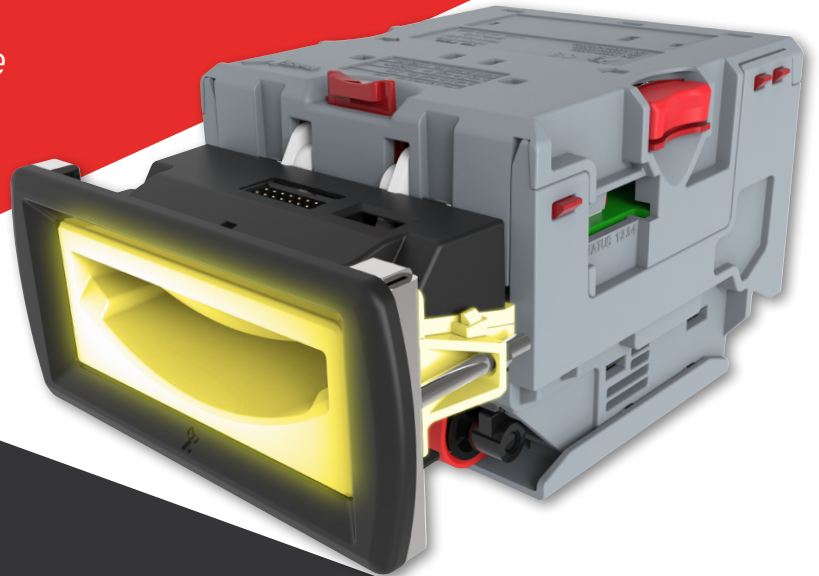


**Innovative Technology**

INTELLIGENCE IN VALIDATION

## NV10 USB

*“Compact stackerless banknote validator”*



- Compact stackerless design
- Enhanced sensing technology
- Proven field reliability
- Future proof
- One build standard for global applications



### FEATURES

- Compact, stackerless note validator
- Proven field reliability
- Over 100 different world currencies accepted
- Industry standard protocols
- Easy maintenance, free firmware updates



### BENEFITS

- Suitable for most applications
- Lowest cost of ownership
- A truly global product
- Simple integration
- Future proof - quick & easy updates via USB, PC or handheld programmer



**Innovative Technology**

INTELLIGENCE IN VALIDATION

## Technical Specification

### Power

Requirements: 12V  
Standby: 0.2A  
Running: 1A  
Peak: 1.5A

### Interfaces

USB option  
Open collector

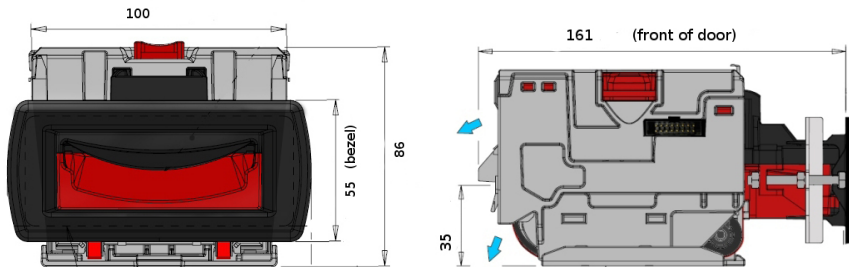
### Protocols

SSP\*  
ccTalk\*  
MDB\*  
Pulse  
Parallel  
Binary  
Serial\*

### Bezel Options

66/82 mm width  
Extended  
Rainbow illumination options\*

\* Rainbow illumination bezel compatible with serial protocols only



- Weight: 0.55kg

**VIEW MORE  
NOTE HANDLING  
PRODUCTS >>**



### Find Us

#### Head Office

REPTECH SAC  
Av. La Molina #2830, Of. S-16,  
Distrito de la Molina, Lima-Peru



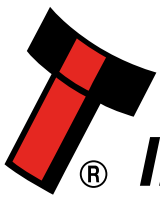
### Telephone

+51 956 201 108



### Email

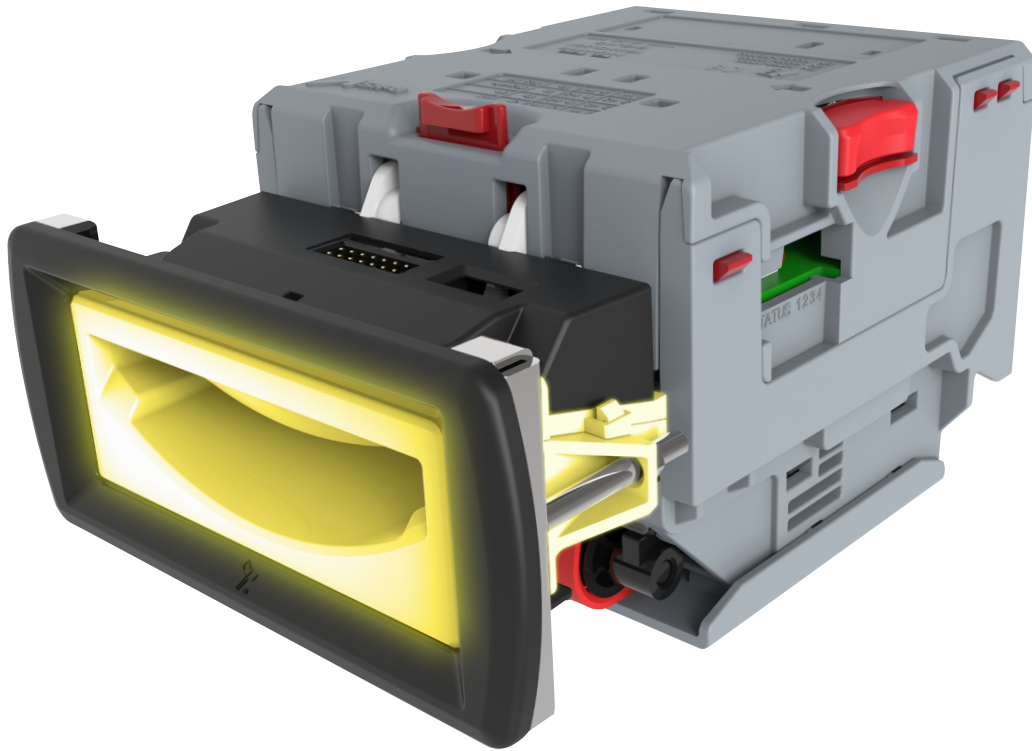
ventas1@reptechperu.com



**Innovative Technology**

INTELLIGENCE IN VALIDATION

# Standard Options | NV10 USB



## Bezel Options



Standard Bezel  
SKU: PA00231



Rainbow Bezel  
SKU: PA01174



Extended Bezel  
SKU: PA00266



66mm Extended Bezel  
SKU: PA00267

	NV10-USB 001	NV10-USB 002	NV10-USB 003	NV10-USB 004
Standard Bezel	<input checked="" type="checkbox"/>	<input type="checkbox"/>	<input type="checkbox"/>	<input type="checkbox"/>
Rainbow Bezel	<input type="checkbox"/>	<input checked="" type="checkbox"/>	<input type="checkbox"/>	<input type="checkbox"/>
Extended Bezel	<input type="checkbox"/>	<input type="checkbox"/>	<input checked="" type="checkbox"/>	<input type="checkbox"/>
66mm Extended Bezel	<input type="checkbox"/>	<input type="checkbox"/>	<input type="checkbox"/>	<input checked="" type="checkbox"/>